

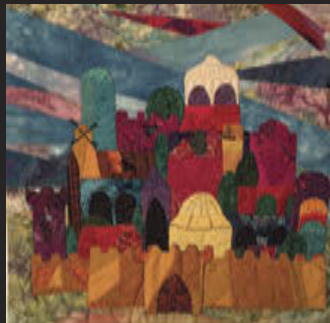
# YOU ARE INVITED

to follow *The Needle's Trail* through the imagination  
of our artists and the treasured objects of our traditions.

**OPENING:** Sunday January 21st, 1:00 - 3:00pm

**Program:** Promptly at 1:00pm in the Neumann Chapel

“The Stitcher’s Art” by Arlene Spector,  
President of Masorot, past National President of the Pomegranate Guild  
Free Community Reception follows



## EXHIBITION

### *The Needle's Trail*

Masorot (Traditions)

The Philadelphia Chapter of the  
Pomegranate Guild of Judaic Needlework\*

The TJM Artists' Collaborative

\*The Temple Judea Museum Fabric Collection

# THE TEMPLE JUDEA MUSEUM

January 19th through March 23rd, 2018

The Temple Judea Museum  
Reform Congregation Keneseth Israel  
8339 Old York Road, (SE corner Township Line Road)  
Elkins Park, PA 19027

**Join Us for the Opening of the Exhibition:**

***The Needle's Trail***

**Sunday, January 21st at 1:00pm**

**Images:**

***Jerusalem*** - Stitched fabric hanging

Artist: Karen Moses

***Torah Cover*** (detail) - Photograph

Artist: Stan Singer

***Shabbat Coat*** - Stitched fabric with antique fragments

Artist: Marlene D'Orazio Adler

**Director/Curator: Rita Rosen Poley; Chair: Karen Shain Schloss**

The museum is a Program Stream recipient of the Pennsylvania Council on the Arts  
215-887-2027; TJMuseum@kenesethisrael.org; www.kenesethisrael.org/museum

Hours: Weekdays: 9:00am - 5:00pm, Friday: till - 9:00pm, Sunday: 9:00am-2:00pm

An accessible facility, groups and tours welcome by appointment